



**NCAA**®

# 2012-13 NCAA Men's Basketball

Officiating Mechanics Changes  
and Points of Emphasis

September 2012

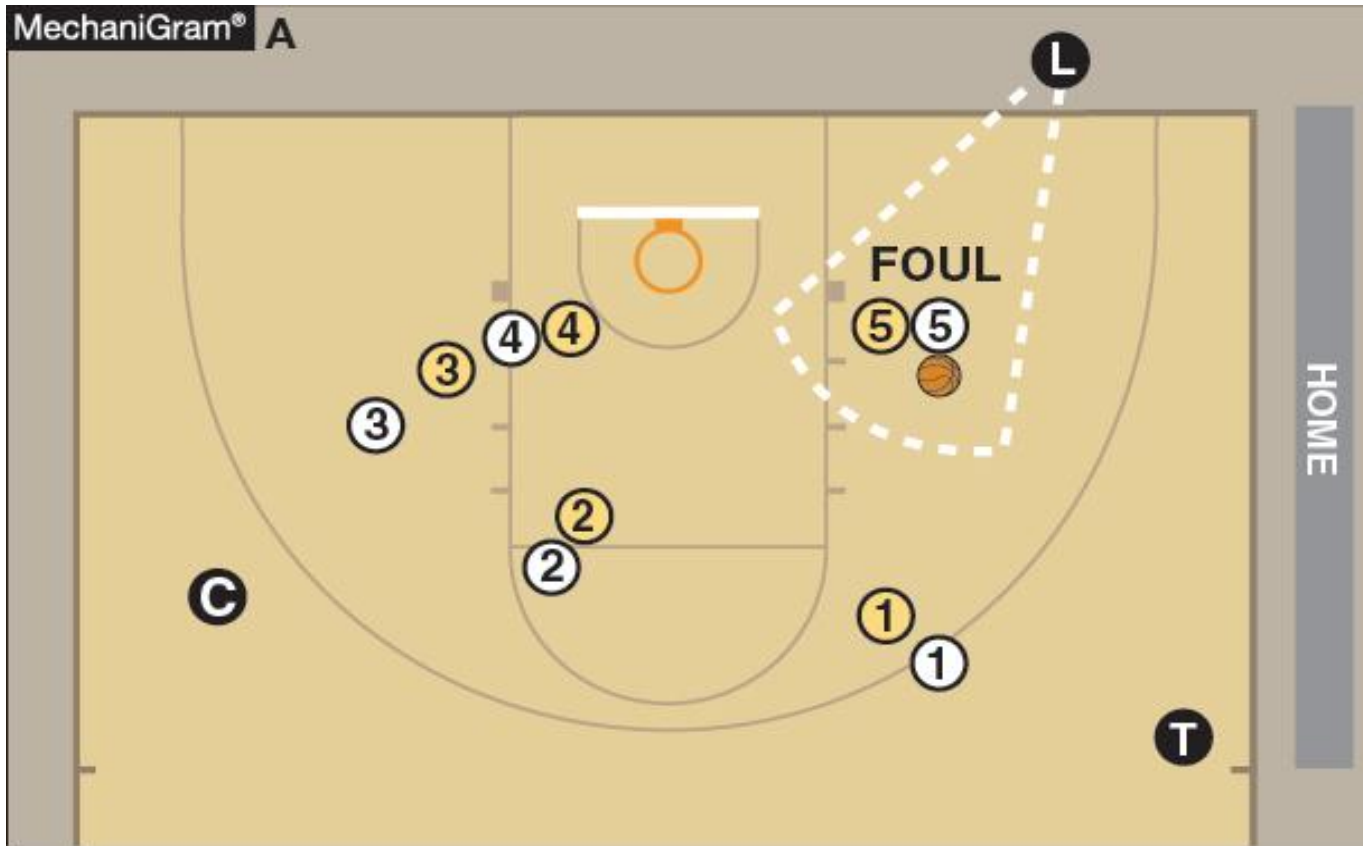


# Option for Calling Official

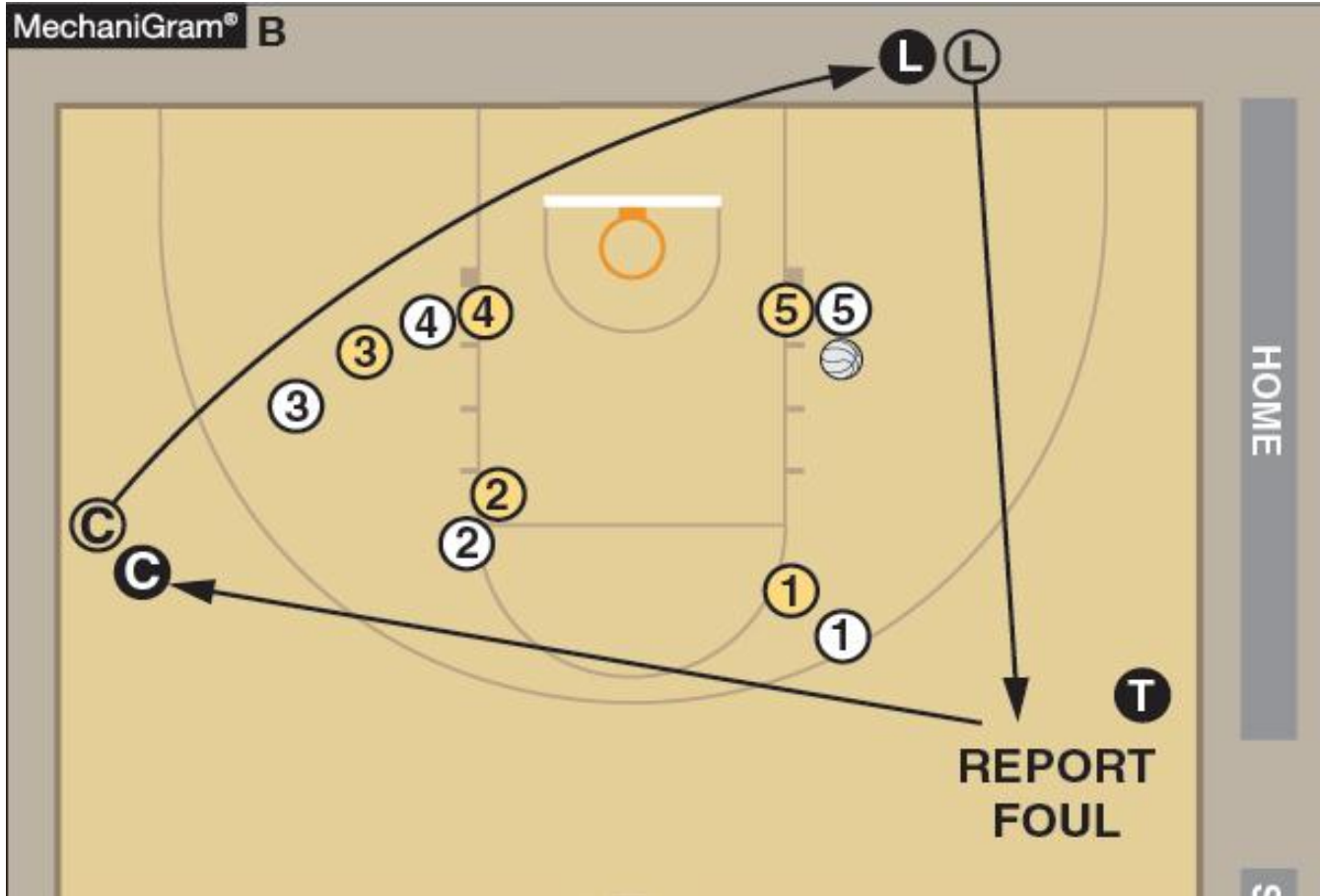
- Option to stay tableside to head off unsportsmanlike situation.
- Use judiciously.



# Option for Calling Official



# Option for Calling Official

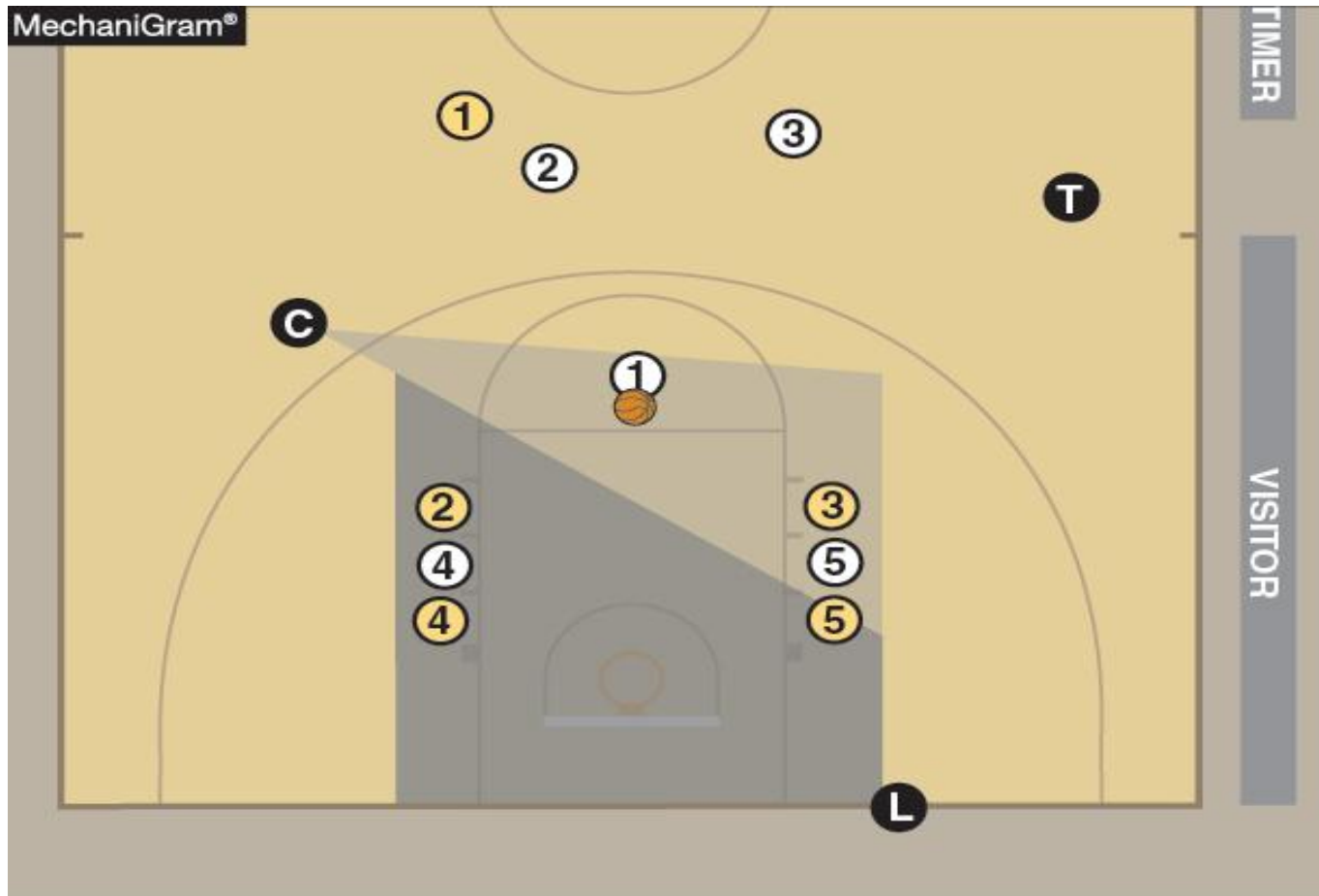


# Trail Official on All Free Throws

- Position at 28-foot line for ALL free throws.
- Observe correct player, correct order.
- Assist with free-throw violations.
- Assist with players “breaking the plane of the three-point line” prior to ball striking the ring, flange or backboard.



# Trail Official on All Free Throws





# Guidelines on Blocking Calls

- Before offensive player becomes airborne, defender **MUST** have two feet on ground, facing opponent and be stationary.
- Referee the defense.
- “To and through” is **NOT** always a player-control foul.
- Obtain proper angles and distance adjustments.
- See completely through the play, meaning your vision must be unobstructed.





# Restricted Area Plays

- When necessary to “get the play right,” it is the responsibility of the center official to deliver definite information, regarding the position of a secondary defender, to the lead official calling a restricted area block/charge play.

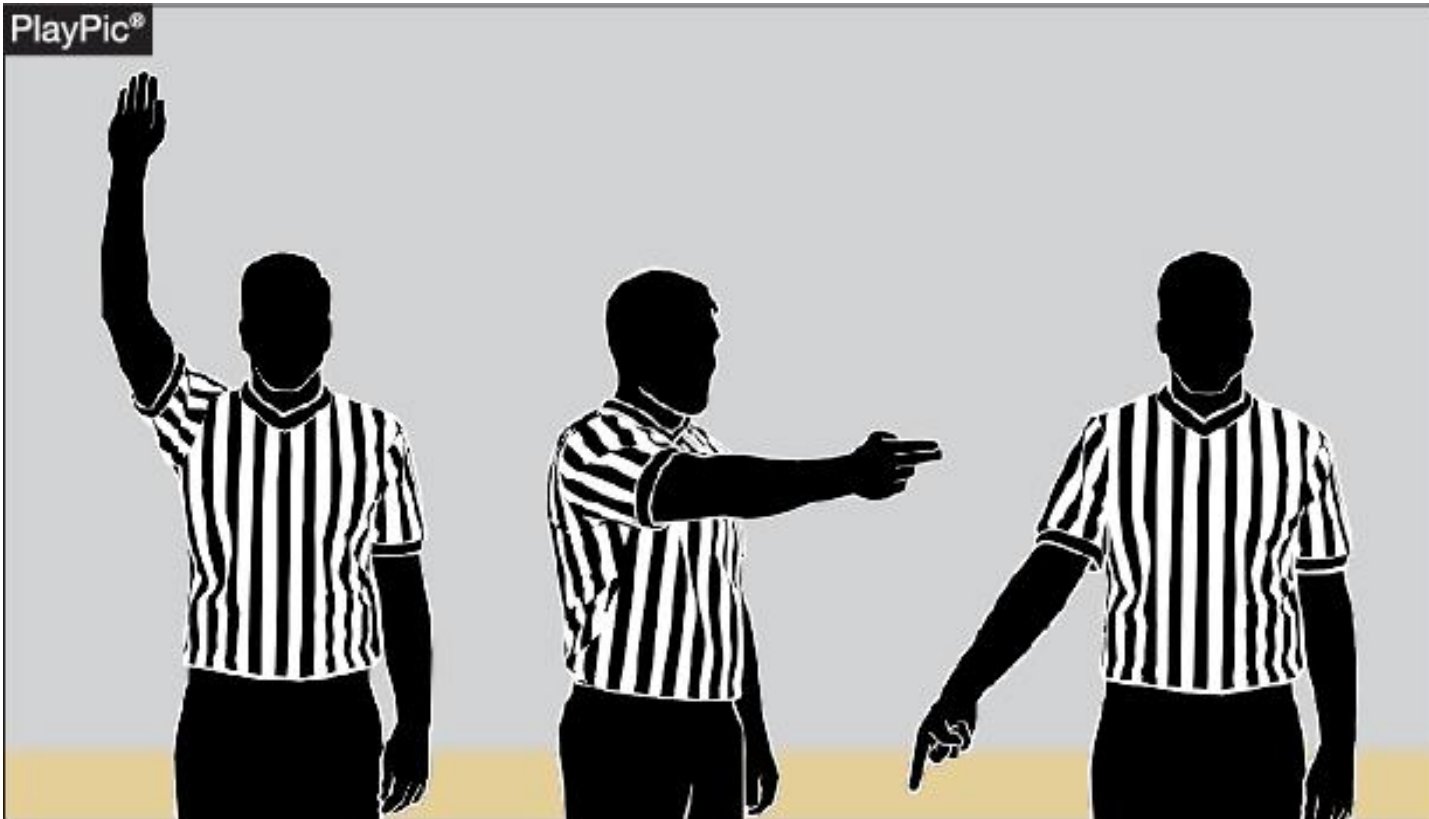


# Stop the Clock

- Signal to stop the clock on fouls, violations or other reasons.
- Not all games have automated timing devices and devices don't always operate correctly.
- When using courtside monitor to correct timing mistake, an official's signal is a point of reference for when the clock should have stopped.



# Stop the Clock



**Stop the clock, point the direction, then indicate the throw-in spot.**

# Clear, Stop, Report

- Clear prior to signaling/reporting fouls to table.
- Move to tableside of court, clear the three-point line and stop to report the foul.
- Use one- or two-hand signal. Remain stopped till report is completed.



# Mirror the Ball

- In most cases, trail to new lead should hustle to endline and move to “mirror” the ball as offensive team comes into frontcourt.
- “Feel” location of ball with peripheral vision.
- “Big picture” mentality.



# Know the Monitor

- Know as much as possible about tableside monitor.
- About 13-minute mark in pregame, check location of monitor and test it.
- Define number of “looks” for any given play.
- At NO time should all three officials congregate at the monitor. One official should always monitor the players.
- All three officials should confer after a monitor review.





# Know the Monitor



**At no time should all three officials congregate at the monitor.**



# Basket Interference and Goaltending

- Lead official **MAY** assist other officials on basket interference and goaltending calls.



# Check Scorebook

- No later than 14 minutes prior to tipoff referee should check scorebook for squad lists and starters.



# Warm-up Jackets

- It is mandatory that all officials wear the approved black jacket with or without a two (2) inch CCA emblem over the left chest pocket location.
- The style of the jacket remains unchanged, but lightweight jackets are now approved uniform apparel.



# Warm-up Jackets



# Eliminate Unauthorized Signals

- There is no approved signal for “On The Floor”. Don’t use it!



**Questions?**





**NCAA**<sup>®</sup>